



WINSLADE — PARK —

COMMUNITY UPDATE | JULY 2020



BURRINGTON
ESTATES

winsladepark.com



WINSLADE PARK UPDATE: YOUR VIEWS MATTER

We have now submitted our Winslade Park planning application, taking on board both comments made at February's public exhibition and further conversations with the local community.

We expect to make a start on major construction work in late 2020.



We'll be keeping you updated throughout the development of the Winslade Park live, work and play campus, with a community newsletter 4 times a year.

We are always keen to hear from members of the local community - please don't hesitate to get in touch at hello@winsladepark.com.



winsladepark.com

KEY BENEFITS

- Planning applications have now been submitted for our Winslade Park live, work and play campus proposals and we would value your comments on our exciting plans. You can find the details on our plans on the East Devon District Council website at <https://bit.ly/2XxAjvM> & <https://bit.ly/30hEkX7>.
- If you would like to talk to us about any part of the Winslade Park planning application, please do not hesitate to contact us at hello@winsladepark.com.
- Work remains on target to secure the long-term future of the Grade II* listed manor house, with transformation into stunning serviced offices and Burrington Business Club.
- We are committed to a development with the best possible environmental standards - by retaining existing buildings and renovating them to a high energy efficient standard, by installing electric car charging points, by linking into new bus routes and by delivering cycle paths into and around the development and connecting to the Clyst Valley trail and cycleway.
- We are transforming the former Stables Club into an outstanding leisure facility to be open to the public, with facilities unrivalled within Exeter and East Devon. These new facilities have been designed with former Exeter Chiefs and England rugby player, Tom Johnson and will be open by autumn 2021.
- We are delivering significantly improved sporting facilities for the local community, with new football pitches and a new home for Clyst Valley Football Club, a publicly accessible swimming pool, reinstated tennis courts & cricket pitch and walking & running trails interspersed with bodyweight resistance equipment.
- The development will be fully integrated into Clyst St Mary, including safe access into the development for the primary school and community-accessible playing pitches & nature trail.
- The Parish Council will receive 25% of Community Infrastructure Payments, to spend on infrastructure projects identified by the Parish - this will be in the region of £450,000.
- The total CIL payments to East Devon will be approximately £1,922,000.



Our Winslade House office spaces will set new standards for greater Exeter.

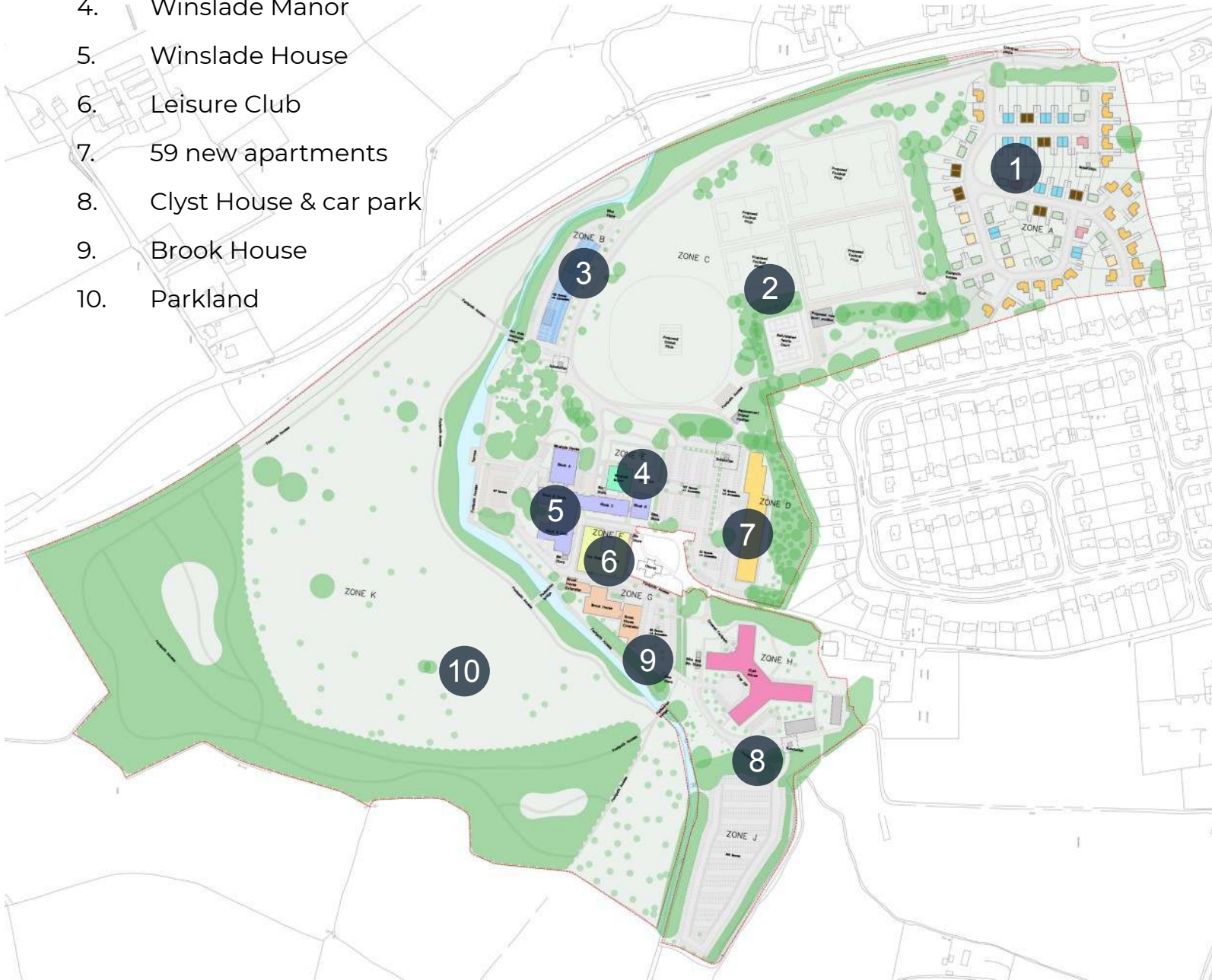


Clyst House will provide office space for a wide range of businesses - boosting the local economy and securing more local employment, with high-specification accommodation in a wide range of sizes.



WINSLADE — PARK —

1. 78 new homes
2. Community sports pitches and new community clubhouse
3. New commercial building
4. Winslade Manor
5. Winslade House
6. Leisure Club
7. 59 new apartments
8. Clyst House & car park
9. Brook House
10. Parkland



hello@winsladepark.com



BURRINGTON
ESTATES

winsladepark.com